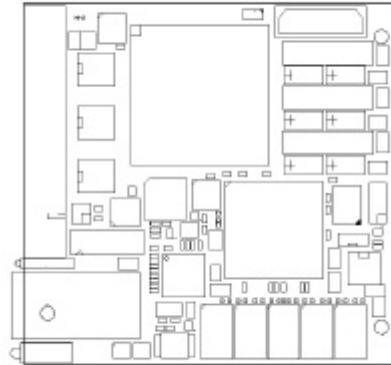


Potomac iSCSI Bridge Entry Level OEM Module

Bridgeworks Data Sheet

Bridgeworks, a global cost leader in data transfer solutions for 22 years has further reduced the cost of providing iSCSI based connectivity solutions for OEMs.



Potomac Entry Level iSCSI Solution

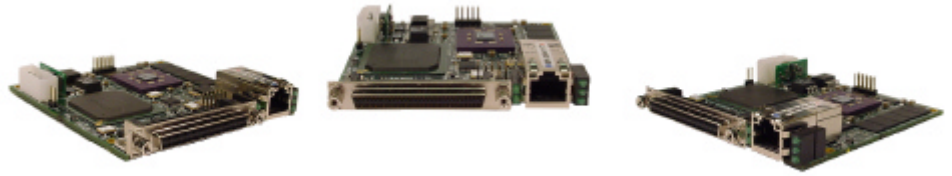
The Entry Level Bridge has been designed to provide a cost effective, simple solution for OEMs who wish to provide iSCSI connectivity for their products. Its industry leading compact form factor, minimal cooling and single +5V supply eases the task of integration the unit into existing cabinetry reducing the all-important time to market.

The Entry Level Bridge gives a cost effective alternative to the use of full performance, high end bridging solutions where the market cannot support the levels of performance or cost. With a sustained performance capability of near wire speed combined with its very compact size, it is equally suitable for integration with standalone devices our the smaller tape or disk autoloaders

Simply Plug n' Play

Key to the success of any product is the ease in which the product can be configured and installed by the end user. The plug n' play Potomac family is extremely easy to implement and use. The web-based in-band GUI ensures users trouble free operation and simple configuration. With the ability to upgrade firmware via the Web based GUI users can always keep up to date with the latest revision. For the more sophisticated user and for remote diagnostics the unit supports two levels of command line interface via a telnet session.





Specification

iSCSI Port:

Single IEEE Gigabit Ethernet
Support for
10BaseT (802.3)
100BaseT (802.3u)
1000BaseT (803.3ab)
Jumbo Packets
Connection: RJ45

Standards:
IPv4
iSCSI v20
CHAPS MD5
DHCP
IPSEC

SCSI Port:

Single Ultra 160 LVD/SE SCSI Interfaces
Auto negotiations for speed from 5MB/s to 160 MB/s
Support for all SCSI command set including Vendor Unique.
Connection: 68pin HDCI

System Memory

4MB Flash
128MB ECC Memory

Indicators

Power On	SCSI Activity	Link Activity
Duplex Link	Link Speed	Signal Quality

Management Interface:

GUI:

In- Band Web based interface for management and monitoring via main Gigabit Ethernet port

Command Line:

Telnet like facility for displaying and controlling configuration data

Physical

Power Consumption:

5V @: 10 Watts approx

Dimensions:

92mm x 95mm (3.62" x 3.75") Height above PCB 14mm (0.55")

Environmental:

Operational: 0 to 40°C

Non-Operational: -20° to 60°

Bridgeworks reserves the right to change the specifications without notice

